

Flexible Choke & Kill Line with PA liner (up to 100°C)

Standard

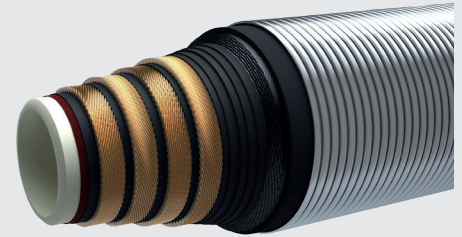
API Spec. 16C up to FSL 3

Construction

Bore type	full flow, smooth bore
Liner material	H ₂ S resistant PA
Operating temperature	-20°C to +100°C (-4°F to 212°F)
Survival temperature	177°C (350°F) for at least 1 hour
Max. available length	60m (200ft)

Features & Comments

- Coupling materials meet NACE MR 01-75 / ISO 15156 latest edition
- See Flexible Tauro™Fit Choke & Kill Lines for subsea BOPs and for Flexible Choke & Kill Lines with extreme small MBRs
- Handling instructions: ContiTech TKO ASO and AS2 latest editions



Technical Data

Inside Diameter		Type	Rated Working Pressure		Test Pressure		Safety Factor (WP)	Outer Diameter		MBR (storage)		MBR (operation)		Weight	
mm	in		bar	psi	bar	psi		mm	in	m	ft	m	ft	kg/m	lb/ft
51	2.0	Standard	345	5000	517	7500	2.25	113	4.5	0.8	2.6	0.8	2.6	24	16
		Standard c/w st. st. wrap						123	4.8	0.8	2.6	0.8	2.6	28	19
		Fire rated						128	5.0	0.9	3.0	0.9	3.0	29	20
		Fire rated c/w st. st. wrap	138	5.4	0.9	3.0	0.9	3.0	33	22					
		Standard	690	10000	1035	15000	2.25	113	4.5	0.8	2.6	0.8	2.6	24	16
		Standard c/w st. st. wrap						123	4.8	0.8	2.6	0.8	2.6	28	19
		Fire rated						128	5.0	0.9	3.0	0.9	3.0	29	20
		Fire rated c/w st. st. wrap	138	5.4	0.9	3.0	0.9	3.0	33	22					
		Standard	1035	15000	1552	22500	2.25	136	5.4	1.0	3.3	1.1	3.6	40	27
		Standard c/w st. st. wrap						146	5.8	1.0	3.3	1.1	3.6	45	30
		Fire rated						150	5.9	1.1	3.6	1.2	3.9	46	31
		Fire rated c/w st. st. wrap	162	6.4	1.1	3.6	1.2	3.9	53	36					
64	2.5	Standard	345	5000	517	7500	2.25	127	5.0	0.9	3.0	0.9	3.0	28	19
		Standard c/w st. st. wrap						137	5.4	0.9	3.0	0.9	3.0	32	22
		Fire rated						141	5.6	1.0	3.3	1.0	3.3	34	23
		Fire rated c/w st. st. wrap	151	5.9	1.0	3.3	1.0	3.3	38	26					
		Standard	690	10000	1035	15000	2.25	127	5.0	0.9	3.0	0.9	3.0	28	19
		Standard c/w st. st. wrap						137	5.4	0.9	3.0	0.9	3.0	32	22
		Fire rated						141	5.6	1.0	3.3	1.0	3.3	34	23
		Fire rated c/w st. st. wrap	151	5.9	1.0	3.3	1.0	3.3	38	26					
		Standard	1035	15000	1552	22500	2.25	149	5.9	1.1	3.6	1.3	4.3	46	31
		Standard c/w st. st. wrap						159	6.3	1.1	3.6	1.3	4.3	51	34
		Fire rated						164	6.5	1.2	3.9	1.4	4.6	53	36
		Fire rated c/w st. st. wrap	175	6.9	1.2	3.9	1.4	4.6	60	40					
76	3.0	Standard	345	5000	517	7500	2.25	141	5.6	0.9	3.0	0.9	3.0	32	22
		Standard c/w st. st. wrap						151	5.9	0.9	3.0	0.9	3.0	37	25
		Fire rated						155	6.1	1.0	3.3	1.0	3.3	39	26
		Fire rated c/w st. st. wrap	167	6.6	1.0	3.3	1.0	3.3	45	30					
		Standard	690	10000	1035	15000	2.25	141	5.6	0.9	3.0	0.9	3.0	32	22
		Standard c/w st. st. wrap						151	5.9	0.9	3.0	0.9	3.0	37	25
		Fire rated						155	6.1	1.0	3.3	1.0	3.3	39	26
		Fire rated c/w st. st. wrap	167	6.6	1.0	3.3	1.0	3.3	45	30					
		Standard	1035	15000	1552	22500	2.25	164	6.5	1.2	3.9	1.4	4.6	52	35
		Standard c/w st. st. wrap						175	6.9	1.2	3.9	1.4	4.6	59	40
		Fire rated						178	7.0	1.4	4.6	1.7	5.6	59	40
		Fire rated c/w st. st. wrap	190	7.5	1.4	4.6	1.7	5.6	67	45					
102	4.0	Standard	345	5000	517	7500	2.25	219	8.6	1.4	4.6	1.4	5.0	89	60
		Standard c/w st. st. wrap						230	9.1	1.4	4.6	1.4	5.0	98	66
		Fire rated						232	9.1	1.5	4.9	1.5	4.9	98	66
		Fire rated c/w st. st. wrap	243	9.6	1.5	4.9	1.5	4.9	108	73					
		Standard	690	10000	1035	15000	2.25	219	8.6	1.4	4.6	1.4	4.6	89	60
		Standard c/w st. st. wrap						230	9.1	1.4	4.6	1.4	4.6	98	66
		Fire rated						232	9.1	1.5	4.9	1.5	4.9	98	66
		Fire rated c/w st. st. wrap	243	9.6	1.5	4.9	1.5	4.9	108	73					