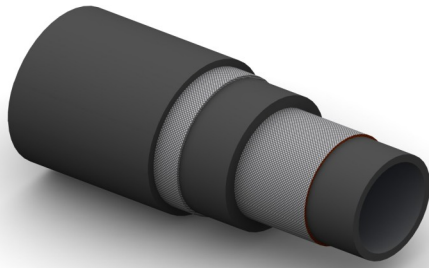


# Slim Line Rotary Hydraulic Hose



## Construction:

**Tube:** Black NBR/CR Blend.

**Reinforcement:** High Strength Steel Cables And Textile Plies.

**Cover:** Black CR, Weather; Oil, Fuel, Ozone and Abrasion Resistant.

**Temperature Range:** -30°C To +82°C.

## Technical Data:

Part No	Inside Dia		O.D. mm	Working Pressure		Minimum Burst Pressure		Min Bend Rad mm	Weight Kg/M
	mm	Inch		Bar	PSI	Bar	PSI		
SLR-40	63	2.1/2	106	207	3000	620	9000	760	11.2
SLR-48	76	3	119	207	3000	620	9000	910	13.0

Dunlop Oil & Marine Ltd  
Jubilee Industrial Estate  
Ashington, Northumberland  
NE63 8UB United Kingdom  
[www.dunlop-oil-marine.co.uk](http://www.dunlop-oil-marine.co.uk)

**Continental**   
**CONTITECH**

The content of this publication is not legally binding and is provided as information only. The trademarks displayed in this publication are the property of Continental AG and/or its affiliates. Copyright © 2011 ContiTech AG. All rights reserved.  
For complete information go to:  
[www.contitech.de/discl\\_en](http://www.contitech.de/discl_en)