

# Dunlop Type 352V

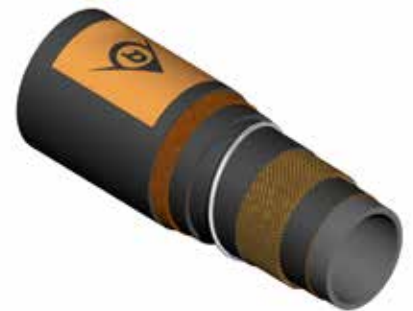
## - High Pressure Suction and Discharge Hose

Exceeding BS EN 1765: 2004 - Type S15

### Application

Recommended for service on docks, jetties and tankers where the working conditions call for strength and robustness combined with flexibility. The Viton rubber compound offers resistance to 100% aromatics and many industrial chemicals. Generally used on hose handling rigs, rather than being manually handled.

\*Hose equivalent also available with butyl lining - Type 352B.



|                               |  |
|-------------------------------|--|
| <b>Working/Burst Pressure</b> | <b>21/84 bar (Dunlop Type 352V)</b>                  |
| <b>Operating Temperature</b>  | * -20°C to +150°C                                    |
| <b>Electrical Continuity</b>  | Electrically continuous or discontinuous as required |
| <b>Maximum lengths</b>        | 12m  |

\* High temperature limit for non-continuous service only

### Construction

|                           |  |
|---------------------------|--|
| <b>Lining</b>             | Synthetic Viton rubber compound for petroleum products with an aromatic content up to 100%   |
| <b>Main reinforcement</b> | Multiple plies of wire cord designed for a combination of high strength and resistance to fatigue. Each layer is fully encapsulated in rubber to prevent abrasion with adjacent layers |
| <b>Embed wire</b>         | Helical steel wire to resist collapse and crush loads  |
| <b>Holding ply</b>        | Textile reinforcement to increase adhesion between hose body and cover   |
| <b>Cover</b>              | Weathering and abrasion resistant rubber compound  |
| <b>Fittings</b>           | Built-in steel nipples with flanges or couplings to suit customer requirements   |

### Technical Design Data

| ID   |     | OD  | Body Weight | End Weight | MBR  | Maximum Working Tensile Load |
|------|-----|-----|-------------|------------|------|------------------------------|
| inch | mm  | mm  | kg/m        | kg/hose    | m    | Tonnes                       |
| 3    | 51  | 119 | 12.1        | 18         | 0.46 | 1.4                          |
| 4    | 102 | 145 | 15.3        | 29         | 0.60 | 1.9                          |
| 6    | 152 | 199 | 23.9        | 46         | 0.90 | 3.8                          |
| 8    | 203 | 252 | 33.3        | 67         | 1.20 | 3.8                          |
| 10   | 254 | 313 | 51.8        | 96         | 1.50 | 4.7                          |
| 12   | 304 | 364 | 65.9        | 122        | 1.80 | 5.3                          |

Hoses manufactured in the United Kingdom

CE branded hoses showing full compliance with European Pressure Equipment Directive PED 97/23/EC